

WEST POINT GREY



3143 Crown St
Painted: 2003
Style: Storybook
Built: 1941
Heritage Register: C

Body: Bute Taupe VC-13
Trim: Edwardian Buff VC-6
Sash: Gloss Black VC-35

KERRISDALE



3838 Cypress St
Painted: 2003
Style: Arts & Crafts
Built: 1912
Heritage Register: A
(restoration and painting in progress photo)

KERRISDALE



3223 W 37th St
Painted: 2000
Style: Craftsman
Built: 1912
Heritage Register: B

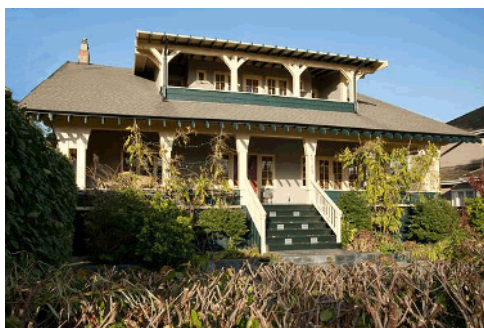
Body: Point Grey VC-24
Body Upper Shingles: Edwardian Pewter VC-23
Trim: Edwardian Cream VC-7
Sash: Gloss Hastings Red VC-30



5629 Angus Dr
Painted: 2002
Style: Arts & Crafts
Built: 1926
Heritage Register: A

Body: Dunbar Grey VC-14
Trim: Edwardian Buff VC-6
Sash: Comox Green VC-19
Doors: Comox Green VC-19
Stucco: Brandon Beige CC-530 (not on colour card)

SHAUGNESSY & ARBUTUS RIDGE



2925 38th Ave
Painted: 2011
Style: Craftsman
Built: 1914
Heritage Register: B

Body: Comox Green VC-19
Trim: Edwardian Buff VC-6
Sash: Haddington Grey VC-15

KITSILANO



3044 Point Grey Rd
Painted: 2016
Style: Craftsman
Built: 1922
Heritage Register: B

Body: Edwardian Pewter VC - 23
Trim: Oxford Ivory VC - 1
Sash: Gloss Black VC - 35
Door: Clear varnish

KITSILANO



1642 Stephens St

Painted: 2016
Style: Craftsman
Built: 1912
Heritage Register: B

Body: Comox Green VC-19
Shingles: Vancouver Green VC-20
Trim: Oxford Ivory VC-1
Sash and Doors: Hastings Red VC-30



4446 W 5th Ave

Painted: 2014
Style: Craftsman
Built: 1912
Heritage Register: B

Body: Hastings Red: VC-30
Trim: Edwardian Buff VC-6
Sash: Gloss Black VC-35



1876 W 3rd Ave

Painted: 2014
Style: Edwardian
Built: 1913
Heritage Register: C

Body: Verdigris VC-22
Trim: Vancouver Green VC-20
Sash and Door: Strathcona Red VC-27



3123 W Broadway

The Hollywood Theatre
Painted 2013
Built: 1935
Heritage Register: B

Body: colour-matched cream (not from TC palette)
Doors: colour-matched red
Trim: Gloss Black

Note: Building owner and new tenant to complete neon restoration of facade.



3550 W 1st Ave

Painted: 2013
Style: Craftsman
Built: 1917
Heritage Register: C

Upper Siding Shingles: Harris Green VC-21
Horizontal Siding, Trim and Soffits: Edwardian Buff VC-6
Sash and Door: Gloss Black



1820 W 10th Ave

Painted: 2012
Style: Craftsman
Built: 1912
Heritage Register: B

Body & Shingles: Mellish Rush VC-28
Trim: Edwardian Buff VC-6
Stuccoed Gables: Haddington Grey VC-15
Sash: Hastings Red VC-30

KITSILANO



1928 Stephens St

Painted: 2011
Style: Edwardian
Built: 1908
Heritage Register: C

Body: Dunbar Buff VC-5
Trim: Pendrell Verdigris
Sash: Hastings Red VC-30



1962 W 2nd Ave

Painted: 2009
Style: Edwardian
Built: 1908
Heritage Register: C

Body: Hastings Red VC-30
Trim: Oxford Ivory VC-1
Sash: Gloss Black VC-35
Porch: Edwardian Porch Grey VC-26



2538 Balaclava St

Painted: 2006
Style: Craftsman
Built: 1912
Heritage Register: C

Body: Haddington Grey VC-15
Body Shingles: Mellish Mahogany VC-31
Trim: Edwardian Buff VC-6
Sash: Gloss Black VC-35
Porch: Edwardian Pewter VC-23



3409 Arbutus St

Painted: 2009
Style: Spanish Revival
Built: 1930
Heritage Register: B
(Arbutus Ridge neighbourhood)

Body stucco: Haddington Grey VC-15
Window & door trim, columns, sash: Oxford Ivory VC-1
Downspouts, decorative sills and brick, pantile roof tiles: Strathcona Red VC-27
Wrought iron railings: Gloss Black VC-35
Beam end brackets: Vancouver Green VC-20



2622 W 7th Ave

Painted: 2006
Style: Vancouver Craftsman
Built: 1912
Heritage Register: C

Body: Hastings Red VC-30
Trim: Edwardian Cream VC-7
Sash & Door: Gloss Black VC-35
Gable Shingles: Strathcona Mahogany VC-34



2650 W 5th Ave

Painted: 2005
Style: Vancouver Craftsman
Built: 1910
Heritage Register: C

Body: Harris Green VC-21
Trim: Kitsilano Gold VC-11
Sash: Gloss Black VC-35

KITSILANO



2722 W 7th Ave
Painted: 2005
Style: Vancouver Craftsman
Built: 1912
Heritage Register: B(M)

Body: Hastings Red VC-30
Trim: Edwardian Buff VC-6
Sash: Gloss Black VC-35



2239 Stephens St
Painted: 2004
Style: Vancouver Craftsman
Built: 1917
Heritage Register: B

Body: Harris Green VC-21
Trim: Harris Cream VC-4
Sash: Comox Green VC-19
Stucco & Base Siding: Gloss Black VC-35



3622 W 3rd Ave
Painted: 2001
Style: Vancouver Craftsman
Built: 1912
Heritage Register: B

Body: Edwardian Buff VC-6
Upper Body Shingles: Harris Green VC-21
Trim: Edwardian Buff VC-6
Sash: Gloss Black VC-35
Stucco & Porch: Haddington Grey VC-15



2622 W 5th Ave
Painted: 1999
Style: Vancouver Craftsman
Built: 1914
Heritage Register: B

Body: Kitsilano Gold VC-11
Upper Body Shingles: Comox Green VC-19
Trim: Kitsilano Gold VC-11
Sash: Gloss Vancouver Green VC-20
Stucco: Haddington Grey VC-15



1641/1661 Dunbar St
Painted: 1999
Style: Craftsman
Built: 1912
Heritage Register: B

Body: Dunbar Grey VC-14
Body Shingles: Hastings Red VC-30
Trim: Dunbar Buff VC-5
Sash: Gloss Black VC-35

MARPOLE



**8743 SW Marine Drive
Colbourne House**

Painted: 2013
Built: 1912
Heritage Register: B

Horizontal Siding & Trim:
Edwardian Buff VC-6
Gable Shingles:
Strathcona Red VC-27
Sash: Gloss Black VC-35

WEST END



1019-1025 Pacific St

Painted: 2003
Style: Edwardian
Built: 1902-1908
Heritage Register: B

Right: Body: Victorian Peridot VC-17
Trim: Kitsilano Gold VC-11
Left: Body: Craftsman Brown VC-32
Trim: Dunbar Buff VC-5



1027-1033 Pacific St

Painted: 2003
Style: Edwardian
Built: 1902-1908
Heritage Register: B

Right: Body: Comox Gold VC-10
Trim: Point Grey VC-24
Left: Body: Strathcona Red VC-27
Trim: Edwardian Buff VC-6



1037-1043 Pacific St

Painted: 2003
Style: Edwardian
Built: 1902-1908
Heritage Register: B

Right: Body: Point Grey VC-24
Trim: Kitsilano Gold VC-11
Left: Body: Strathcona Mahogany VC-34
Trim: Haddington Grey VC-15



1041-1051 Pacific St

Painted: 2003
Style: Edwardian
Built: 1902-1908
Heritage Register: B

Right: Body: Mt Pleasant Tan VC-12
Trim: Kitsilano Gold VC-11
Left: Body: Comox Green VC-19
Trim: Kitsilano Gold VC-11

WEST END - MOLE HILL*



1164 Comox St

Re-painted: 2016
Style: Victorian
Built: 1889?
Heritage Register: B?

Body: Pendrell Red VC-29
Trim: Pendrell Verdigris VC-22
Sash: Gloss Black VC-35
Porch: Edwardian Porch Grey VC-26



1147 Pendrell St

Re-painted: 2015
Style: Victorian
Built: 1889
Heritage Register: B

Body: Harris Green VC-21
Trim: Edwardian Cream VC-7
Sash: Gloss Black VC-35
Porch: Edwardian Porch Grey VC-26



1103 Pendrell St

Re-painted: 2015
Style: Victorian
Built: 1907
Heritage Register: B

Body: Harris Green VC-21
Trim: Edwardian Buff VC-6
Sash: Gloss Black VC-35
Porch: Edwardian Porch Grey VC-26



1139 Pendrell St

Re-painted: 2015
Style: Victorian
Built: 1889
Heritage Register: B

Body: Pendrell Red VC-29
Trim: Pendrell Green VC-18
Sash: Gloss Black VC-35
Porch: Edwardian Porch Grey VC--26



**1117 Pendrell St
(Leslie Lane House)**

Painted: 2004
Style: Early Vernacular
Built: 1903
Heritage Register: B

Body: Bute Taupe VC-13
Trim: Edwardian Buff VC-6
Sash: Gloss Black VC-35

*To view the paint schemes of Mole Hill, visit the True Colours webpage and download the Mole Hill Historic Paint Schemes PDF that identifies the original paint schemes on the Mole Hill Community Housing Society houses painted in 1999-2000.

True Colours is a grant program created by Vancouver Heritage Foundation and Benjamin Moore paint. Heritage Buildings on the Vancouver Heritage Register are eligible to receive funds from VHF and free paint from Benjamin Moore to restore their original historic paint schemes. Vancouver Heritage Foundation grants provide support to heritage building owners for the maintenance, restoration, repair and rehabilitation of their buildings. The grant application deadline for all grants is February 1st of every year.

WEST END



**1415 Barclay St
(Roedde House)**

Painted: 2006
Style: Queen Anne Revival
Built: 1893
Heritage Register: A

Body: Victorian Peridot
VC-17
Trim: Pendrell Green
VC-18
Sash: Hastings Red VC-30
Fish Scale Shingles:
Pendrell Red VC-29



**995 Bute St
(Rand House)**

Painted: 2005
Style: Queen Anne Revival
Built: 1896
Heritage Register: B

Body: Comox Gold VC-10
Fish Scale Shingles: Mount
Pleasant Tan VC-12
Trim: Pendrell Red VC-29
Sash: Gloss Black VC-35