

LEGEND

- Tour stops
- Places That Matter sites
- VHF Booth (at stop 9)
- Refreshments
- Suggested parking (charges may apply)
- Roads
- Pedestrian / cycling access
- City approved bike routes
- Translink transit routes for full transit information visit translink.ca
- Caution: Road construction along Nanaimo Street may cause delays or alter available routes for drivers

This map is for illustrative purposes only. You will need a Vancouver street map.

Please also note that there are several traffic-calming locations and one-way streets in Grandview and many streets don't go through for cars. Please reference a detailed street map for further information.

VHF would like to acknowledge the tour is on the traditional, ancestral, unceded territories of the Musqueam, Squamish and Tsleil-Waututh peoples.



12pm - 5pm

THIS BROCHURE IS
SATURDAY 28th
SEPT



GRANDVIEW HERITAGE TOUR
VANCOUVER HERITAGE FOUNDATION

WELCOME



Vancouver Heritage Foundation welcomes you to the Grandview Heritage Tour! Grandview is an energetic, multi-cultural neighbourhood full of historic places, architectural heritage, community spaces and local businesses. The tour is a unique opportunity to explore the history and evolution of this early suburb by stepping inside a variety of historic homes and buildings. Each stop has been chosen as representative of a time, place, event or significant era in the community and all help tell the story of the Grandview and Commercial Drive neighbourhood.

With many stops close to each other, the tour can be enjoyed by walking, cycling or taking transit as well as driving. Be sure to check the map in this guide for suggested pay parking options, as well as cycling and transit routes, but please also bear in mind the area has traffic-calming measures in place on many streets so a detailed street map is recommended. We hope you enjoy the day and feel inspired to explore Vancouver's history and heritage places.

Vancouver Heritage Foundation promotes the appreciation and conservation of our city's historic places through events, tours, lectures and workshops. We also offer online and print resources that create opportunities to learn about Vancouver's history and heritage places. Through grants and other resources we are able to support efforts to restore and reuse heritage buildings and sites, preserving them for future generations. To find out more about VHF visit vancouverheritagefoundation.org.

IMPORTANT TOUR REMINDERS

- **Wear socks and bring a reusable bag to carry shoes.** Wearing socks or bringing slippers is required as you will be asked to remove your shoes at some stops.
- Bring a **Vancouver street map** to help you find the stops.
- **Bring this brochure to every stop.** Volunteers will check off each stop upon arrival.
- **No photography or cell phone use on private properties.**

THANK YOU TO OUR SPONSORS

Presenting Sponsor



Tour Sponsors



In-Kind Sponsor



Event Partner



Grandview Heritage Group

TOUR STOPS

open to ticket holders

- 1 - **1050 Odium Dr**
- 2 - **1548 Kitchener St**
- 3 - **Britannia Community Services Centre & ɬxʷqʷeləwən ct Carving Centre**
1661 Napier St
- 4 - **1760 Napier St**
- 5 - **1333 Lakewood Dr**
- 6 - **St. Francis of Assisi**
2025 Napier St
Open 12pm - 4:30pm ONLY
Grandview Heritage Group booth
- 7 - **2062 Venables St**
- 8 - **The Cultch**
1885 Venables St
Discover Vancouver's Heritage booth
- 9 - **Templeton Secondary School**
727 Templeton Dr
VHF Info booth
- 10 - **Dayton Boots Factory**
2250 E Hastings St

PLACES THAT MATTER

publicly accessible plaques

- A - **Elms of East 6th**
Corner of E 6th & Commercial Dr
 - B - **Victoria Park**
1425 Victoria Dr
 - C - **The WISE Hall**
1882 Adanac St
 - D - **Original Border of Vancouver at Nanaimo Street**
2401 E Hastings St
- Also tour stops:
- #8 - **Vancouver Free University (The Cultch)**
1885 Venables St
 - #10 - **Dayton Boots Factory**
2250 E Hastings St

WASHROOMS

suggestions only

- #9 - **Templeton Secondary School**
727 Templeton Dr
- #3 - **Britannia Community Services Centre**
1661 Napier St

REFRESHMENTS

suggestions only

- JJ Bean Coffee Roasters***
2206 Commercial Dr
- Dayton Boots Factory**
2250 E Hastings St

*Enjoy a free coffee and 50% off a baked item courtesy of JJ Bean Coffee Roasters! See coupon included with your ticket for details.

THIS BROCHURE IS YOUR 2019 TICKET

- | | |
|--|--|
| 1050 Odium Dr | St. Francis of Assisi
2025 Napier St
Open 12 - 4:30 ONLY |
| 1548 Kitchener St | 2062 Venables St |
| Britannia Community Services Centre & ɬxʷqʷeləwən ct Carving Centre
1661 Napier St | The Cultch
1885 Venables St |
| 1760 Napier St | Templeton Secondary School
727 Templeton Dr |
| 1333 Lakewood Dr | Dayton Boots Factory
2250 E Hastings St |



1050 Odlum Dr (1910)
Heritage B, VHF True Colours 2007
At the turn of the 20th century, this neighbourhood saw rapid development driven by its proximity to good industrial jobs along the waterfront. This home is one of four built on this block in 1910 by local builder J.L. McKenzie. It was the most expensive of the four, costing \$3,000 to construct. The current owner has painstakingly restored the house and its many historic features including original art glass windows, intricate wood mouldings, fir floors and interior doors. The oak fireplace mantel was discovered under the deck, and was restored and reinstalled.



1548 Kitchener St (1907)
This family home was built two years after a streetcar line connected Grandview's growing shopping area with downtown. The first resident was Samuel Vance, a plasterer. Purchased by two architects in 2002, its traditional layout and many architectural features were retained. Exterior restoration included stripping away asphalt shingles to reveal the original wood siding, now restored and painted in a historically accurate paint scheme, adding to the charm of this historic block. A recent update is the addition of interior storm windows to improve comfort and energy efficiency while preserving the original windows. The blocks bounded by Kitchener and Grant have no back lane, resulting in the unusual front driveways.



Britannia Community Services Centre (1910, 1976) 1661 Napier St
Open: 9am-4pm at Carving Centre (2017)*, access via Parker St @ Cotton Dr
The oldest portion of this complex is the 1910 Britannia Secondary School. Designed by school board architect Norman Leech and added to by E.D. King, it was the second high school to be built in Vancouver and is now the oldest remaining. In the 1970s the neighbourhood came together with the Vancouver School Board, Vancouver Public Library and the City of Vancouver to create a unique complex of educational, recreational and social amenities. The new village-style development designed by architects Downs/Archambault included an elementary school, ice rink, pool, library and other amenity spaces all adjacent to the existing secondary school. A recent addition is the 9am-4pm at Carving Centre designed by architect Joe Wai; it recognizes the long use of the land by First Nations peoples as well as the significant Indigenous population (about 10%) in the area today.

*Please note the 9am-4pm at Carving Centre is open to ticket holders. You may explore the public areas of the rest of the site at your leisure.



Greenius House (1910)
1760 Napier St, main floor only
Built by Charles Reid, the house became known for Dr. Arthur W. Greenius who purchased the property a few years later. His dental practice was at 1st Avenue and Commercial Drive and he lived here and served the community until 1957. The house adjoined a large garden stretching to Salsbury Drive that included a pair of 1906 BC Mills pre-fabricated cottages; Arthur and Minnie Greenius' son and daughter lived in the cottages and raised their families across the garden from their childhood home. When the current owners purchased the house, the garden had already been sold separately and the cottages were subsequently demolished to make way for new duplexes. The house remains well-preserved with original unpainted woodwork and built-in cabinetry.



1333 Lakewood Dr (1974, 2001)
Architect Stephanie Robb is credited as a pioneer in the movement to restore and modernize Vancouver Specials through her dramatic 2001 transformation of this 1974 home. Designed in the 1960s to house a quickly growing population, including many extended families, the Special was a practical, cheap and adaptable design that evolved from drawings by iconoclastic draftsman Larry Cudney. Robb's renovation shone a new light on them. With extraordinary rethinking of the spaces and aesthetic, Robb has created an innovative open-concept home with modernist appeal and an early example of what would become a popular design movement in the city.



St. Francis of Assisi (1938 & 1909)
2025 Napier St, Heritage A
OPEN 12pm - 4:30pm ONLY
A long-time beacon for the Catholic and Italian community, the Romanesque-style church with bell tower adjoins a 1909 mansion formerly known as *Wilga*, built for Australian auctioneer William Miller during a time when Grandview was promoted as a rival of Shaughnessy. The house was adapted in the 1920s to become a monastery with up to 16 Franciscan monks in residence and became the rectory – its restoration in the 1990s won a City of Vancouver Heritage Award. The balance of the block is 1920s and 1930s houses built on the subdivided *Wilga* estate. Across Semlin, the old house now used by St. John of Shanghai Church was a convent. Newspapers identified the neighbourhood as "Little Italy" around 1967 when it was home to about 30,000 Italian-Canadians.



2062 Venables St (1912)
Garden and main floor only
This house was the third one built on several lots owned by Italian immigrant Guiseppe Pennimpede, who in 1908 had erected an almost identical house for himself, since demolished, on the Lakewood corner. Built as a rental with few embellishments – for example, there was no fireplace – 2062 was later occupied for decades by family members; the lot on its east side was an orchard and vegetable garden until 2013. The current owners saw it as a "rescue" more than a restoration when they took it on nine years ago. Wood windows replaced aluminum sliders and the original wood siding and soffits emerged from a half-century's slumber beneath beer-bottle stucco. A VHF True Colours paint scheme of Mellish Rust and Oxford Ivory creates a lovely backdrop for the beautiful garden, which includes a reclaimed parking area at the back for apples and vegetables.



The Cultch (est. 1973, built 1909)
1885 Venables St, Heritage B(M)(I)
Select spaces open plus mini tours available every hour starting at 12:30pm

Originally the Grandview Methodist Church (1909-1968) at the heart of this Anglo-Canadian working-class community, the building became Vancouver Free University from 1968-1973, which offered a wide range of accessible education to the burgeoning counterculture, and was honoured in 2012 with a VHF Places That Matter plaque. In 1973, it became the Vancouver East Cultural Centre, or The Cultch as it's now known, with buildings adapted for theatrical performances. In 2009, the original building was rehabilitated by Proscenium Architecture to better suit the needs of the growing arts organization; the manse next door on Venables is used for administration and rehearsals, while the former parish hall on Adanac Street, known as the WISE Hall since 1963, is an unaffiliated performance and community venue.

GRANDVIEW by Jak King

For scores of generations, the wooded hills of Grandview were prime hunting and trapping land for First Nations. Once the Europeans arrived, Grandview was the scene of intensive logging, with skid-roads running down to False Creek and Burrard Inlet. Logging continued into the late 1890s and in the entire district less than a dozen houses were occupied before 1901. In 1891, an interurban railway had been built between Vancouver and New Westminster. The route, including what would become Commercial Drive, made the area better known but, with no stops in the neighbourhood, it did little by itself to add to the growth of Grandview.

With the new century, timber leases were released for public sale, and eagerly sought by speculators. The incorporation of Grandview into Vancouver's streetcar system led to a building boom which peaked in 1912. Many of the Grandview properties that seem so characteristic of the district today owe their birth to this boom. These include several of the tour's participants such as the houses at 1760 Napier (Stop #4), and 2062 Venables (Stop #7) as well as *Wilga* (Stop #6) and the recently rehabilitated Brookhouse mansion on Parker at Victoria Drive, now a multi-family development.

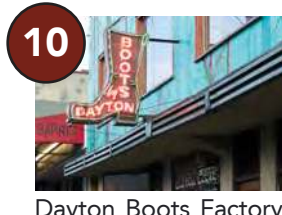
Education and religion were strong components of the community from the beginning. Xpey Elementary is on the site of a school built in 1903 to serve the earliest families, and the original 1910 Britannia Secondary building can still be found just off the Drive. Two early churches have undergone radical restorations, but both The Cultch, originally a 1909 Methodist church (Stop #8) and the 1910 Presbyterian Church, now a housing complex at Napier & Salsbury, illustrate how heritage is woven into the living community. Churches and schools from the 1920s (Stop #9) and 1930s (Stop #6), are also featured on the tour.

Grandview was hard hit by the Great Depression. It took another war and significant immigration to kickstart Grandview's economy, but it hasn't looked back since. Entrepreneurial Italians moved into the neighbourhood in large numbers in the 1950s, and a section of Commercial Drive is now officially recognized as Little Italy. They were followed by waves of immigrants from all over the globe, many of whom settled here. It is now a thriving cosmopolitan stew of a place. The Drive's architectural mix of Edwardian stores with apartments above, the more utilitarian one-storey buildings of the 1920s and 1930s, and a scattering of Modern ones, today house street markets and cafes of increasing popularity.



9 Templeton Secondary School (1926-28), 727 Templeton Dr
Heritage B, select spaces open

One of BC's first junior high schools, Templeton Secondary was designed by local architects Sharp & Thompson with school board architect F.A.A. Barrs. It has served this community for over 90 years, gaining additions in 1962 and becoming a full secondary. The reinforced concrete structure and rough-cast stucco exterior are indicative of the Moderne style popular in the 1920s. The original design is still largely visible through high ceilings, spacious hallways and classrooms and large windows throughout.



10 Dayton Boots Factory (1946)
2250 E Hastings St
Tours, refreshments and live music, plus special offers on merchandise for ticket holders

Founded in 1946 by Charlie Wohlford, the Dayton Boots Factory is recognized for its rugged reliable work boots. Charlie was a veteran of the logging industry and knew what it took to create durable boots and with his son Wayne and grandson Ray, many industries trusted and turned to Dayton. The three Wohlford generations operated the factory for 50 years and the neon "Boots by Dayton" sign is an East Vancouver landmark. Dayton Boots Factory and its iconic sign were recognized in 2012 with a VHF Places That Matter plaque. In 2016, in its 70th year, Eric and Catherine Hutchingame acquired Dayton Boots and its timeless designs to reboot and revitalize the Wohlford legacy of Lasting Canadian Originals.

THANK YOU

The Grandview Heritage Tour is only possible through the effort of over 75 volunteers and the generosity of the home and building owners and stewards. Special thanks to all of those who assisted in opening the sites on tour and to Martin Knowles for providing tour photography. www.mkphotomedia.com

Volunteers (as of September 6, 2019):

Bernadette Alegre	Paul Hayes	Sandra North
Jack & Debbie Allen	Benji Heran	Vikki Patenaude
Christine Bowers	Jo-ann Hilton	Andrew Picard
Kevin Bowers	Heidi Hunchak	Barb Radlgruber
Ruth Brodie	Heather Hyde	Maggie Rayner
Gloria Burgess	Joanne Ingledew	John & Jacki Ross
Sheila Butt	Carole Jacques	Lindsay Salt
Carrie Chan	Claudia Jessen	Karen Seaboyer
Sharon Cheney	Jan Johnston	Yasmine Semeniuk
Cynthia Chung	Diana Kilgour	Judy Sheeshka
Michael Croteau	Miro Kinch	Fay Shen
William Doka	Sooz Klinkhamer	Ann-Marie Spicer
Brenda Draney	Tony Leung	Dhara Surana
Zelma Edgar	Hannah Leyland	April Underwood
Marita Edwards	Yahe Li	Cara Wang
Gwen English	Anne Lidstone	Penny Williams
Martin Ferries	Yini Lu	Jenn Wong
Ian Flock	Emma Mackie	Helen Wood
Barbara Fousek	Kathy Mair	John Wood
Pamela Francis	Chloe Martin	Ellen Xiang
Betty Fussell	-Cabanne	Erin Zapisocki
Peter Genge	Veronica Maud	
John Godfreyson	Kim McCarthy	
Baihan Guo	Sue Melnychuk	
Sally Halliday	Craig & Jill Moberg	
Imbi & Phillip Harding	Laura Moberg	
June Harrison	Morgan Montpellier	
Richard Hartfiel	Peter Mustard	

GUIDELINES FOR VISITORS

- Private stops are open 12pm - 5pm only, no earlybirds or latecomers.
- You may visit the stops in any order, but you may only visit each stop once.
- Photography is strictly prohibited on private tour properties.
- All attendees must have a ticket and be at least 6 years of age (infants in front carriers are permitted without a ticket, no other exceptions).
- Please do not bring large bags or backpacks.
- No food or drink, smoking or pets on private tour properties.
- Cell phone usage is not permitted inside private stops.
- Do not park in driveways, or block driveways or streets.
- Refrain from touching furniture, art and household items.
- Expect a line-up outside some of the stops.
- Washrooms are available at the marked locations only.
- You will be asked to remove your shoes at some stops so please wear socks and bring a reusable bag.
- We cannot guarantee all stops on the tour are mobility device accessible.
- Anyone who does not adhere to these guidelines may be asked to leave and tickets will not be refunded.

Please be aware that designated VHF photographers will take photographs and/or live recordings at this event. These materials are the sole property of VHF and will not be sold or otherwise redistributed but may be used in VHF marketing and communications.

Vancouver Heritage Foundation

402 - 510 W. Hastings St. Vancouver BC V6B 1L8
604 264 9642 www.vancouverheritagefoundation.org
Charitable Organization #891765968
[Facebook.com/TheVancouverHeritageFoundation](https://www.facebook.com/TheVancouverHeritageFoundation) [Twitter.com/VanHeritage](https://twitter.com/VanHeritage)